



Amy Nadine De Luise

February 11, 1978 - January 6, 2016

Franklin - Amy N. De Luise, age 37, passed away on Wednesday, January 6, 2016 at Newton Medical Center. Born in Weehawken, Amy had lived in North Bergen until her family moved to Sussex County 25 years ago. She had been formally employed as a dental assistant for Dr. Charles Knaap in Fair Lawn. Amy was predeceased by her father, Daniel M. De Luise on March 4, 2011. She is survived by her daughter, Noelle J. Giordano of Franklin; her mother, Tara De Luise of Franklin; her brother, Michael De Luise of Franklin; and her two sisters, Kelly Pardo of Hopatcong and Danielle De Luise of Franklin. Memorial services will be held at 6 p.m. on Saturday, January 16, 2016 at the Pinkel Funeral Home, 31 Bank Street (Route 23), Sussex. Friends may pay their respects to the family on Saturday prior to the service from 5 p.m. to 6 p.m. at the funeral home. In lieu of flowers, the family requests that memorial donations may be made to the family. Online condolences may be offered to the family at www.pinkelfuneralhome.com

Cemetery Details

Private Cremation Services

Previous Events

Visitation

JAN 16. 5:00 PM - 6:00 PM (ET)

Pinkel Funeral Home, Inc.
31 Bank Street (Route 23)
Sussex, NJ 07461
(973) 875-3272
alexis@pinkelfuneralhome.com
<https://www.pinkelfuneralhome.com/>

Service

JAN 16. 6:00 PM (ET)

Pinkel Funeral Home, Inc.
31 Bank Street (Route 23)
Sussex, NJ 07461
(973) 875-3272
alexis@pinkelfuneralhome.com
<https://www.pinkelfuneralhome.com/>

Tribute Wall

KW

“ I remember when my life was in total shambles,completly wrecked... Amy brought a smile to my life,helped me pick up the pieces and hold my head up high again. No matter what she was doing, if she could make you feel better she would!!!
Amy, i will miss you forever!! And love you to eternity!
May god hold you close to his side and guide you thro the journey of heaven!!



Kris "Tex" Wilson - January 16, 2016 at 11:53 PM



“ Divine Peace Bouquet was purchased for the family of Amy Nadine De Luise.



January 14, 2016 at 12:45 PM

TG

“ Tina Gavin lit a candle in memory of Amy Nadine De Luise

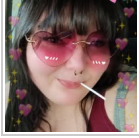


Tina Gavin - January 13, 2016 at 02:59 PM

TG

I will miss you sorely, and all the funny times we had together. Fly High Girl xxxooo

Tina Gavin - January 13, 2016 at 03:01 PM



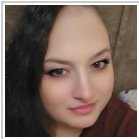
“ *I remember the day she helped me start believing in myself. To this day my life has been brighter just because of her. She will always be that hope in my heart.*

Mallory Seney - January 09, 2016 at 08:47 PM

DH

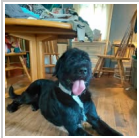
“ *Such a sweet person from the day we met you were an angel on earth now your an angel in Heaven rest well my dear friend you will be missed Any* ❤️❤️

Debra Herring - January 09, 2016 at 05:33 PM



“ *Her smile.. Is pure sunshine. I will carry it forever.*

Dawn Harootunian - January 09, 2016 at 12:32 PM



“ *I remember how i would stay awake at night until i heard her car pull up next door.*

Helen Weltman - January 09, 2016 at 10:34 AM

SE

“ *Amy - had a wonderful smile and laugh.*

Sean - January 09, 2016 at 09:14 AM



“ *A Full Life was purchased for the family of Amy Nadine De Luise.*



January 08, 2016 at 10:12 PM



“ *Divine Peace Bouquet was purchased for the family of Amy Nadine De Luise.*



January 08, 2016 at 10:04 PM



“ *Enchanted Cottage was purchased for the family of Amy Nadine De Luise.*



January 08, 2016 at 08:11 PM